



Notes from the Vale

Friday 13th September 2024

Volume 23, Issue 1

Welcome from Mr Lewis-Cole

WELCOME BACK! I hope that you all had a wonderful summer break and found time to spend time doing the things that you love.

If you passed by school over the summer, you would have seen lots and lots going on. As well as redecorating more classrooms and shared spaces across the school, we have had an upgrade completed on our fire alarm systems (courtesy of the Local Authority), Babcock apprentices in helping to improve and maintain the site, Babcock employees giving up a day to support with improvements to the outside space, created new office spaces, had a new server installed and made improvements to various shared spaces used by pupils. A very busy summer indeed. My huge thanks for Mr Freeman, our Site Manager, for coordinating all this work and for project managing all the improvements. In addition, many teachers gave up time over their summer to come into school and prepare the learning environments for their new classes. Again, my huge thanks to our teachers for the dedication and creativity they have shown. We look forward to sharing all of these improvements with you soon.

It has been wonderful to welcome lots of new families into the Lipson Vale family this term. Our new foundation pupils are settling well into 'big' school and are getting used to the routines of school life. It has been great to see them engaging in their new environment and building relationships with their key adults and beginning to form friendships. They start school full time next week so I hope that they rest well over the weekend!

We have also welcomed new members of staff. You have all been very kind and welcoming to them as they settle in to life at Lipson Vale. Please do say hello to the new faces if you haven't done so already.

Meet the teacher

You will have received a message about the 'Meet the Teacher' meetings we are holding next week (the dates are included in this newsletter). This is a great opportunity to come into school and, informally, meet your child's new teacher and find out about the curriculum and other events happening this year. We hope you can make it and look forward to welcoming you.

Boom Reader

We are very excited to have launched 'Boom Reader' - our new online reading record. You will have received an email from Mrs Low letting you know how to log on and get started with using this simple tool to celebrate and record the reading taking place at home. If you are having problems getting logged on, please pop into school on the 'Meet the Teacher' date and a member of staff will be able to help out. 70% of families have already signed up and are using Boom Reader (which is fantastic). Foundation families will be invited to join in a couple weeks - don't panic, you haven't missed anything.

A quick reminder that school starts at 8.45am. Any pupil arriving after 8.55am (after the bell rings) is late and must sign in through the office.

Have a wonderful weekend.

Together we are inspiring a community with a bright future.

Resilience, Collaboration, Responsibility, Bravery, Communication, Self-belief

News & Events



Starting school in September 2025?

Come and see what Lipson Vale Primary has to offer...

We will be hosting tours for prospective parents for the September 2025 intake throughout October and November 2024. Please call the school office on **01752 224801** to book yourself onto a tour.

Numbers are capped so booking is essential.

Wednesday 16th October @10am
Thursday 24th October @ 2pm
Saturday 9th November @ 10am
Saturday 23rd November @ 10am
Friday 29th November @ 9.30am

Together we are inspiring a community with a bright future.

Resilience, Collaboration, Responsibility, Bravery, Communication, Self-belief



'Meet the Teacher' meetings 2024

As we start the new academic year, we would like to invite families to attend an **informal 'Meet the Teacher' event** after school to find out about your child's **new year group** and the year ahead. As I said, these are informal sessions where you can collect key information, speak to adults working with your child and find out about the curriculum. We hope that you can all attend.

The Lipson Vale team will be available for **one hour** after the time shown below. You can **move between year groups** if there is a clash on the same day.

Year One: Wednesday 18th September @ 3.30pm

Year Two: Wednesday 18th September @ 3.30pm

Year Three: Wednesday 18th September @ 3.30pm

Year Four: Wednesday 18th September @ 3.30pm

Year Five: Wednesday 18th September @ 3.30pm

Year Six: Monday 16th September @ 3.30pm

Together we are inspiring a community with a bright future.

Resilience, Collaboration, Responsibility, Bravery, Communication, Self-belief

News & Events

Uniform Expectations



Grey pinafore dress, skirt or trousers
Green or white school polo shirt or white shirt,
long or short sleeved (**with a school tie if wearing
a shirt KS2**)

Dark green jumper or cardigan (logo optional)
Grey shorts for the summer (optional)
Green check dress for summer (optional)
Black shoes NOT trainers
Baseball cap for the summer

Don't forget your PE kits!

Our full uniform breakdown can be found [here](#).



Polite request that no smoking
or vaping is to take place
outside the school gates at
drop off and collection.

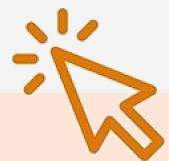
Drop off and collection

School starts at 8.45am.

Arriving after 8.55am receives a late mark.

Schools finishes at 3.10pm (Foundation),
3.15pm (KS1) and 3.20pm (KS2).

UPDATE YOUR DETAILS



If you have recently changed any contact
information (phone number, address etc)
please let the school know so that we can
update our records. We have added a sim-
ple online form to our website which you
can complete (in seconds) to notify us of
any changes.

News & Events



Lipson Academy OPEN EVENING

Tuesday 17th September

Headteacher introductions

18:00 and 19:00

Discover more about what Lipson is all about here →



Highest performing non-selective school in the city



PART OF THE TED WRAGG TRUST

Ted Wragg
TRUST

Officially rated 'Good' in all areas by Ofsted



Do not miss our...

ACADEMY TOURS

Call 01752 671318

We are very proud of our school and what it can offer your child - in the classroom and away from formal lessons.

Don't miss our Academy tours, a chance to see Lipson in action during a typical school day.

To book a tour simply contact us on 01752 671318 to let us know when you would like to come and we will look forward to showing you around.

Highest performing non-selective school in the city



PART OF THE TED WRAGG TRUST

Ted Wragg
TRUST

Officially rated 'Good' in all areas by Ofsted



Is your child due to start secondary school next year?

Now is the time to start thinking about your child moving from primary onto secondary school. If your child was born between 1 September 2013 and 31 August 2014 and are in Year 6, they are now eligible to apply for a secondary school place. All the information you will need about secondary school admissions in 2025 is on our website www.plymouth.gov.uk/schooladmissions. From here, you can apply online for school places and read the guide for parents which contains the links to the individual school's admission policies and forms.

Applying online is quick and easy - all you need is an email address. Once you apply online we will let you know which school your child has been allocated on Monday 3 March 2025.

Remember: The deadline to apply is 31 October 2024 so visit www.plymouth.gov.uk/schooladmissions now.

News & Events



PRICES FROM £36 PER DAY INCLUDES ALL SPOOKTACULAR ACTIVITIES

SPOOKTACULAR

OCTOBER HALF TERM 2024

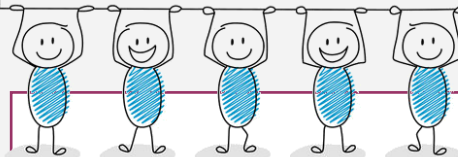
@PLYMOUTH COLLEGE

MONDAY 28TH OCTOBER - FRIDAY 1ST NOVEMBER

This half term come and join us for an action packed week of sports, activity, art and fun. In celebration of **Halloween** we have a **Spooktacular** theme.

BOOK NOW @
www.high5sportscamps.co.uk

WE NEED YOU



We are looking for a school cleaner. 12.5 hours a week, 41 weeks of the year.

Applications are available from the school office.



**Peninsula
Dental**
Social Enterprise

Waiting lists for Peninsula Dental are now open to patients aged 1—111 at the Plymouth site.

Click here to be taken to the registration form (you will need your child's full name, date of birth, NHS number, home address and school)

In need of a dentist?

Collective Worship

We have enjoyed welcoming pupils back into school for the start of the new academic year. In collective worship we thought about our READY behaviours and what this means for each of us inside and outside of the classroom. We also reminded ourselves of the expectations within school for polite and considerate behaviour.

What does READY look like in your classroom?

Dates for your diaries:

Wb 16.09.2024	Meet the teacher meetings
20.09.2024	PTFA Sweet Treat Friday
Wb 21.10.2024	Parents Evenings
Wb 28.10.2024	Half term
4.11.2024	Non Pupil Day
22.11.2024	PTFA Christmas Fair and Light Switch on
25.11.2024	Flu Vaccinations
17.12.2024	Carol Service
20.12.2024	Christmas Lunch
23.12.2024	Start of Christmas break
6.1.2025	Non Pupil Day



School Meals



SCAN ME

CATERed 
FEEDING AMBITIONS

School Money



SCAN ME



schoolmoney

Bernice Terrace, Lipson, Plymouth, PL4 7HW
01752 224801



www.lvps.co.uk



lipson.vale.primary.school@plymouth.gov.uk

@LipsonValePS



Lipson Vale Primary

